



Postcards from Bali

alix lawson
LONDON

Greetings from the Island of Gods – also known as Bali.

This is a land of plenty, where vistas bring full colour saturation at noon then fade out into softer, milder shades as the sun sinks beneath the skyline each evening.

The landscape speaks of abundance and nourishment: the whole island – from beach to banyan tree - is cocooned by coral reefs. It is quite simply, paradise found. For me, Bali offers an escape but also a sense of coming home. Connection and peace are mine for the taking.

Yoga is an integral part of my life. As so many others over the centuries have found, it brings balance to the busy and calm to the chaos – and it is in part what led me to Ubud, a town nestled inland among jewel-green rice paddies and dense jungle. Incense hangs in the heat and gifts to the gods are placed on palm fronds in front of every building. Further south is another haven, Uluwatu. Here on the coast, perched on cliffs which hug the shore, you can watch surfers wait for waves.





As ever, I was moved to capture some of what Bali offers and recreate it in my fabrics. Bali Breeze, a light, floaty cotton and linen blend which comes in Mist, Sand, Sunset, Fern and Palm evokes the coolness following a day of hazy heat beneath a golden sun.

Meanwhile, Island Paradise is a more structured cotton. It comes in Coconut, Salt, Sand, Clay, Bamboo and Jungle - calling to mind rainforest adventures or long, lazy afternoons on the beach.

Two pre-existing collections perfect for upholstery have been expanded to add colourways informed by Bali. Oasis, a structured but soft linen, now comprises five hues, Cloud, Sky, Mist, Rain and Ocean, while Monsoon Mist, a lightweight linen, offers four colours: Clay, Stone, Fern and Lichen.

Reproducing these hues on new fabrics – and knowing they will work seamlessly with my existing collections – has been the perfect way for me to remember Bali and will forever transport me to dawn sun salutations and days spent with silvery sand between my toes.

Alix
/x

Bali Breeze,

A light, soft cotton linen blend suitable for drapery

alix lawson
LONDON



Sand



Fern



Mist



Palm



Sunset



Available in 5 colourways | 60% cotton, 40% linen
Width 310cm - 122.04 inches

Island Paradise,

A structured cotton blend suitable for curtains

alix lawson
LONDON



Coconut



Clay



Salt



Bamboo



Sand



Jungle



Available in 6 colourways | 50% cotton 50% polyester
Width 142cm - 55.9 inches
Slate

Oasis

A structured and soft linen ideal for upholstery, available in 5 new colourways

alix lawson
LONDON



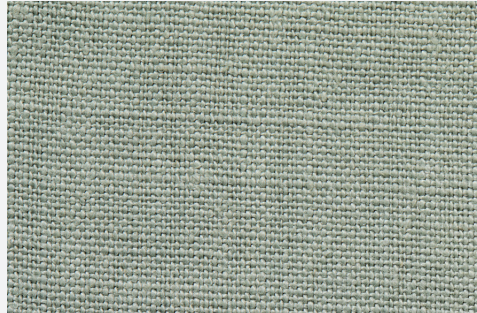
Mist



Sky



Cloud



Rain



Ocean



Available in 5 colourways | 100% Linen |
Width 139cm - 54.72 inches

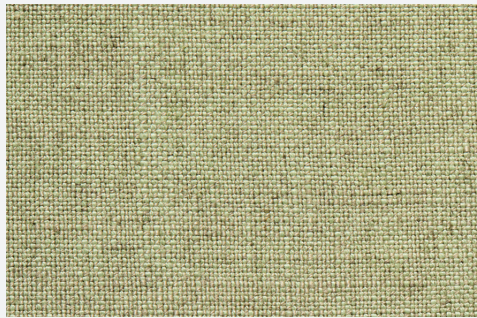
Monsoon Mist

A lightweight linen, available in 4 new colourways

alix lawson
LONDON



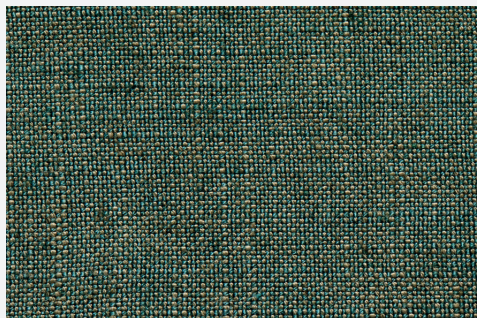
Stone



Fern



Clay



Lichen



Available in 4 colourways | 67% viscose, 33% linen
Width 137cm - 53.93 inches



alix lawson
LONDON

www.alixlawson.com